

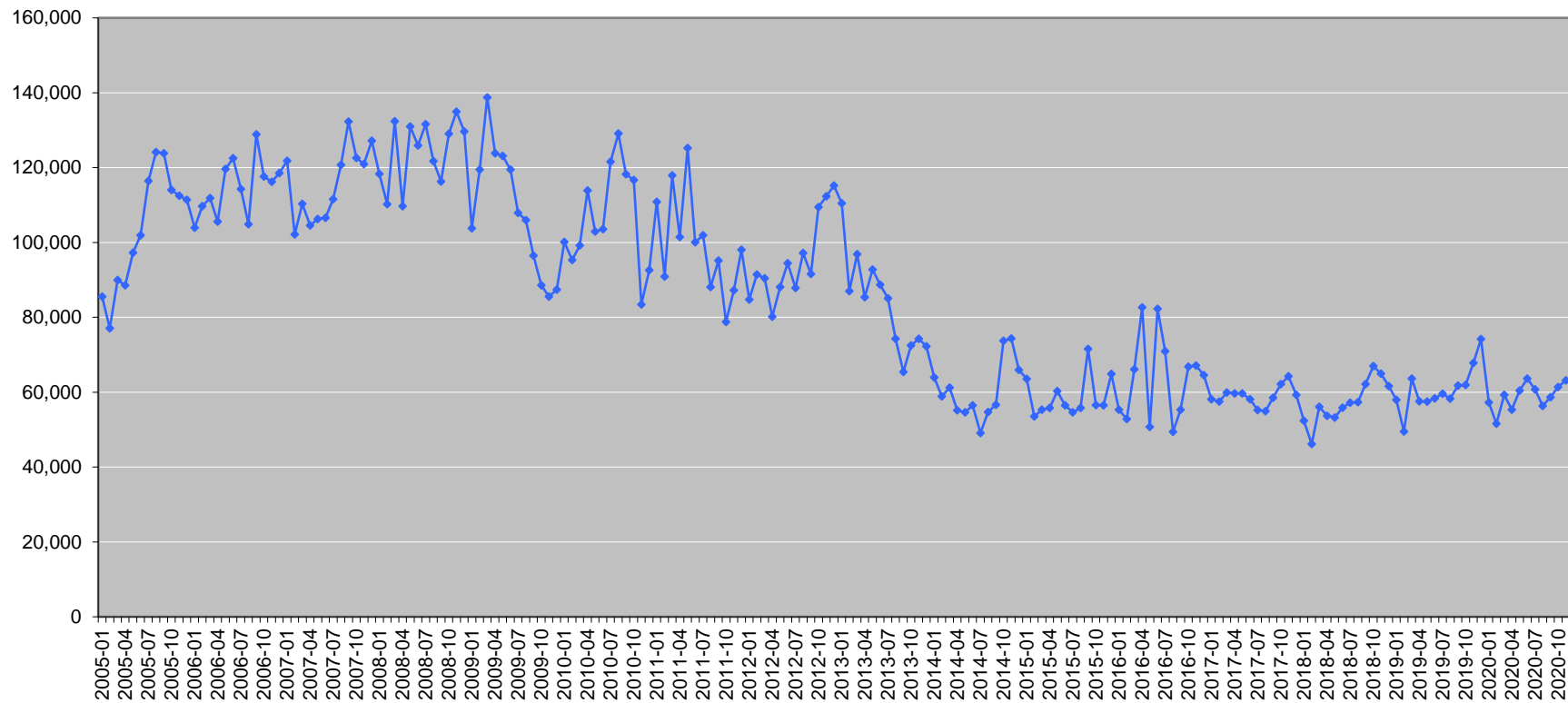
Mobile Number Portings

Mobile Number Portability ("MNP") refers to an arrangement for the porting of numbers from one mobile network operator to another, usually upon customers' request.

流動號碼轉攜

流動號碼轉攜 (MNP) 指流動網絡營辦商之間的號碼轉攜安排，通常是因應消費者要求而進行的。

Number of Successful Portings 流動號碼成功轉攜數字



* HKCA 2103 refers to "Requirements for Mobile Number Portability by Database Solution" issued by the Communications Authority.

* Submitted Applications refer to the Number Portability Request (NPR, refer to HKCA2103) in the off-line electronic number porting platform.

* Successful Porting refers to the Successful Completion of Advice of Portable Number (SCAPN, refer to HKCA2103) in the off-line electronic number porting platform.

* There is a difference between NPR and SCAPN because some porting requests are rejected due to various reasons such as mismatch of information, or cancelled by the customer. Any rejected porting request can be resubmitted and it should be treated as a new porting request.

* HKCA2103規格指通訊事務管理局發出的規格《透過數據庫方案提供流動電話號碼可攜服務的規定》。

* 申請宗數是離線電子號碼轉攜平台的號碼轉攜要求 (NPR · 參閱HKCA2103) 數字。

* 成功轉攜宗數是離線電子號碼轉攜平台的號碼轉攜通知成功完成 (SCAPN · 參閱HKCA2103) 數字。

* 部分轉攜要求因資料不符而被拒或消費者要求取消申請，因此NPR和SCAPN的數字並不相同。被拒的轉攜要求可以經營辦商再次申請，但須視為一個新的轉攜申請。

Month 月份	Number of Submitted Applications 申請宗數	Number of Successful Portings 成功轉攜宗數	Porting Success Rate 成功率
1999-04	80,600	76,900	95.41%
1999-05	82,900	77,500	93.49%
1999-06	69,700	68,000	97.56%
1999-07	70,426	67,400	95.70%
1999-08	67,536	65,215	96.56%
1999-09	76,097	71,127	93.47%
1999-10	70,104	67,276	95.97%
1999-11	81,577	77,037	94.43%
1999-12	67,522	64,406	95.39%
2000-01	64,477	62,526	96.97%
2000-02	67,867	65,210	96.08%
2000-03	122,756	119,298	97.18%
2000-04	135,356	129,993	96.04%
2000-05	142,623	138,466	97.09%
2000-06	141,860	137,604	97.00%
2000-07	144,300	139,178	96.45%
2000-08	148,757	142,940	96.09%
2000-09	143,492	140,232	97.73%
2000-10	144,797	141,106	97.45%
2000-11	138,289	133,359	96.44%
2000-12	144,509	139,141	96.29%
2001-01	122,911	118,778	96.64%
2001-02	133,041	127,884	96.12%
2001-03	170,329	163,231	95.83%
2001-04	174,503	168,610	96.62%
2001-05	180,234	173,884	96.48%
2001-06	175,011	170,667	97.52%
2001-07	178,004	170,302	95.67%
2001-08	153,861	148,682	96.63%
2001-09	162,992	157,625	96.71%
2001-10	176,485	170,253	96.47%
2001-11	150,146	144,804	96.44%
2001-12	132,779	127,896	96.32%
2002-01	130,541	126,133	96.62%
2002-02	101,594	97,892	96.36%
2002-03	145,516	140,360	96.46%
2002-04	95,442	91,673	96.05%
2002-05	81,440	77,580	95.26%
2002-06	66,500	63,300	95.19%
2002-07	67,100	64,000	95.38%

Month 月份	Number of Submitted Applications 申請宗數	Number of Successful Portings 成功轉攜宗數	Porting Success Rate 成功率
2002-08	61,800	58,700	94.98%
2002-09	62,400	59,400	95.19%
2002-10	61,200	58,300	95.26%
2002-11	56,600	53,600	94.70%
2002-12	64,300	60,900	94.71%
2003-01	84,700	80,700	95.28%
2003-02	74,900	71,500	95.46%
2003-03	121,100	115,700	95.54%
2003-04	117,500	112,700	95.91%
2003-05	115,500	110,600	95.76%
2003-06	102,700	97,600	95.03%
2003-07	94,000	89,400	95.11%
2003-08	86,500	82,100	94.91%
2003-09	75,600	71,400	94.44%
2003-10	75,300	71,600	95.09%
2003-11	70,400	66,300	94.18%
2003-12	69,800	65,800	94.27%
2004-01	65,000	61,300	94.31%
2004-02	70,800	66,800	94.35%
2004-03	75,500	71,000	94.04%
2004-04	88,600	83,600	94.36%
2004-05	92,700	87,300	94.17%
2004-06	93,800	88,100	93.92%
2004-07	100,500	94,400	93.93%
2004-08	129,500	123,900	95.68%
2004-09	148,400	142,600	96.09%
2004-10	101,000	95,600	94.65%
2004-11	98,400	92,900	94.41%
2004-12	96,400	90,700	94.09%
2005-01	90,619	85,565	94.42%
2005-02	81,412	77,065	94.66%
2005-03	94,354	89,961	95.34%
2005-04	93,883	88,568	94.34%
2005-05	103,526	97,291	93.98%
2005-06	108,113	101,936	94.29%
2005-07	123,417	116,476	94.38%
2005-08	130,787	124,150	94.93%
2005-09	130,811	123,808	94.65%
2005-10	120,388	114,020	94.71%
2005-11	118,516	112,510	94.93%
2005-12	117,757	111,397	94.60%
2006-01	110,109	103,965	94.42%
2006-02	117,087	109,677	93.67%
2006-03	118,546	111,854	94.35%
2006-04	111,406	105,539	94.73%
2006-05	126,228	119,658	94.80%
2006-06	128,821	122,521	95.11%
2006-07	120,203	114,298	95.09%
2006-08	109,698	104,887	95.61%
2006-09	136,698	128,893	94.29%
2006-10	124,908	117,622	94.17%
2006-11	124,138	116,215	93.62%
2006-12	126,815	118,507	93.45%
2007-01	130,541	121,825	93.32%
2007-02	108,611	102,193	94.09%
2007-03	117,957	110,342	93.54%
2007-04	111,537	104,600	93.78%
2007-05	113,280	106,253	93.80%
2007-06	113,680	106,566	93.74%
2007-07	119,911	111,576	93.05%
2007-08	130,650	120,709	92.39%
2007-09	143,892	132,300	91.94%
2007-10	134,960	122,550	90.80%
2007-11	129,938	120,943	93.08%

Month 月份	Number of Submitted Applications 申請宗數	Number of Successful Portings 成功轉攜宗數	Porting Success Rate 成功率
2007-12	136,530	127,140	93.12%
2008-01	126,780	118,305	93.32%
2008-02	118,021	110,228	93.40%
2008-03	140,970	132,371	93.90%
2008-04	113,617	109,684	96.54%
2008-05	139,220	131,007	94.10%
2008-06	132,124	125,933	95.31%
2008-07	138,689	131,586	94.88%
2008-08	129,157	121,727	94.25%
2008-09	122,452	116,314	94.99%
2008-10	135,454	129,011	95.24%
2008-11	140,050	134,908	96.33%
2008-12	134,719	129,684	96.26%
2009-01	108,377	103,756	95.74%
2009-02	124,487	119,491	95.99%
2009-03	146,075	138,760	94.99%
2009-04	130,318	123,865	95.05%
2009-05	130,313	123,120	94.48%
2009-06	125,134	119,479	95.48%
2009-07	114,154	107,940	94.56%
2009-08	112,885	105,932	93.84%
2009-09	102,486	96,478	94.14%
2009-10	94,046	88,597	94.21%
2009-11	90,617	85,503	94.36%
2009-12	92,001	87,365	94.96%
2010-01	103,620	100,172	96.67%
2010-02	99,304	95,359	96.03%
2010-03	103,953	99,235	95.46%
2010-04	118,874	113,897	95.81%
2010-05	106,423	102,965	96.75%
2010-06	107,342	103,526	96.45%
2010-07	125,556	121,558	96.82%
2010-08	133,976	129,122	96.38%
2010-09	123,419	118,241	95.80%
2010-10	120,630	116,653	96.70%
2010-11	87,969	83,407	94.81%
2010-12	97,617	92,596	94.86%
2011-01	115,209	110,883	96.25%
2011-02	96,488	90,907	94.22%
2011-03	125,925	117,958	93.67%
2011-04	105,186	101,436	96.43%
2011-05	129,182	125,232	96.94%
2011-06	104,003	100,098	96.25%
2011-07	106,437	101,900	95.74%
2011-08	93,229	88,069	94.47%
2011-09	105,082	95,201	90.60%
2011-10	85,306	78,803	92.38%
2011-11	93,238	87,275	93.60%
2011-12	106,809	98,043	91.79%
2012-01	92,741	84,750	91.38%
2012-02	100,205	91,469	91.28%
2012-03	97,475	90,423	92.77%
2012-04	86,639	80,183	92.55%
2012-05	93,579	88,132	94.18%
2012-06	101,881	94,499	92.75%
2012-07	96,849	87,880	90.74%
2012-08	108,170	97,149	89.81%
2012-09	100,346	91,563	91.25%
2012-10	116,575	109,447	93.89%
2012-11	118,855	112,352	94.53%
2012-12	121,282	115,168	94.96%
2013-01	116,613	110,484	94.74%
2013-02	91,554	87,021	95.05%
2013-03	102,214	96,903	94.80%

Month 月份	Number of Submitted Applications 申請宗數	Number of Successful Portings 成功轉攜宗數	Porting Success Rate 成功率
2013-04	90,102	85,344	94.72%
2013-05	98,572	92,756	94.10%
2013-06	93,927	88,752	94.49%
2013-07	89,995	85,058	94.51%
2013-08	78,953	74,259	94.05%
2013-09	69,269	65,400	94.41%
2013-10	77,120	72,454	93.95%
2013-11	78,608	74,280	94.49%
2013-12	76,464	72,225	94.46%
2014-01	68,197	63,945	93.77%
2014-02	62,491	58,900	94.25%
2014-03	65,574	61,204	93.34%
2014-04	59,085	55,177	93.39%
2014-05	58,489	54,653	93.44%
2014-06	60,056	56,474	94.04%
2014-07	52,288	49,099	93.90%
2014-08	57,818	54,671	94.56%
2014-09	59,988	56,677	94.48%
2014-10	77,710	73,691	94.83%
2014-11	77,912	74,348	95.43%
2014-12	69,166	65,999	95.42%
2015-01	66,677	63,577	95.35%
2015-02	56,520	53,556	94.76%
2015-03	58,196	55,318	95.05%
2015-04	58,274	55,806	95.76%
2015-05	62,386	60,264	96.60%
2015-06	59,631	56,481	94.72%
2015-07	57,757	54,657	94.63%
2015-08	59,046	55,815	94.53%
2015-09	76,241	71,540	93.83%
2015-10	60,214	56,589	93.98%
2015-11	59,929	56,475	94.24%
2015-12	67,927	64,882	95.52%
2016-01	57,963	55,292	95.39%
2016-02	53,502	52,827	98.74%
2016-03	69,334	66,122	95.37%
2016-04	85,976	82,672	96.16%
2016-05	53,691	50,738	94.50%
2016-06	85,500	82,269	96.22%
2016-07	73,827	70,918	96.06%
2016-08	52,269	49,404	94.52%
2016-09	58,571	55,317	94.44%
2016-10	70,764	66,788	94.38%
2016-11	70,953	67,150	94.64%
2016-12	68,354	64,583	94.48%
2017-01	63,129	58,153	92.12%
2017-02	60,801	57,534	94.63%
2017-03	63,773	59,904	93.93%
2017-04	63,258	59,639	94.28%
2017-05	63,408	59,640	94.06%
2017-06	61,218	58,102	94.91%
2017-07	57,954	55,260	95.35%
2017-08	59,071	54,917	92.97%
2017-09	63,058	58,504	92.78%
2017-10	66,277	62,165	93.80%
2017-11	68,389	64,219	93.90%
2017-12	63,571	59,300	93.28%
2018-01	56,835	52,370	92.14%
2018-02	49,436	46,157	93.37%
2018-03	59,952	56,107	93.59%
2018-04	57,755	53,680	92.94%
2018-05	57,144	53,242	93.17%
2018-06	60,112	55,846	92.90%
2018-07	61,279	57,223	93.38%

Month 月份	Number of Submitted Applications 申請宗數	Number of Successful Portings 成功轉攜宗數	Porting Success Rate 成功率
2018-08	61,863	57,353	92.71%
2018-09	67,803	62,194	91.73%
2018-10	69,956	66,936	95.68%
2018-11	69,632	64,937	93.26%
2018-12	66,183	61,586	93.05%
2019-01	62,016	57,944	93.43%
2019-02	53,234	49,489	92.97%
2019-03	68,046	63,666	93.56%
2019-04	61,996	57,562	92.85%
2019-05	61,534	57,515	93.47%
2019-06	60,370	58,379	96.70%
2019-07	64,994	59,629	91.75%
2019-08	63,917	58,311	91.23%
2019-09	68,007	61,790	90.86%
2019-10	68,489	61,887	90.36%
2019-11	73,732	67,817	91.98%
2019-12	80,082	74,181	92.63%
2020-01	62,727	57,292	91.34%
2020-02	56,173	51,602	91.86%
2020-03	65,241	59,315	90.92%
2020-04	60,406	55,325	91.59%
2020-05	65,531	60,429	92.21%
2020-06	68,656	63,630	92.68%
2020-07	66,307	60,726	91.58%
2020-08	61,736	56,293	91.18%
2020-09	63,836	58,699	91.95%
2020-10	67,179	61,413	91.42%
2020-11	68,398	63,163	92.35%