

Statistics on Mobile Number Portings

流動號碼轉攜統計數字

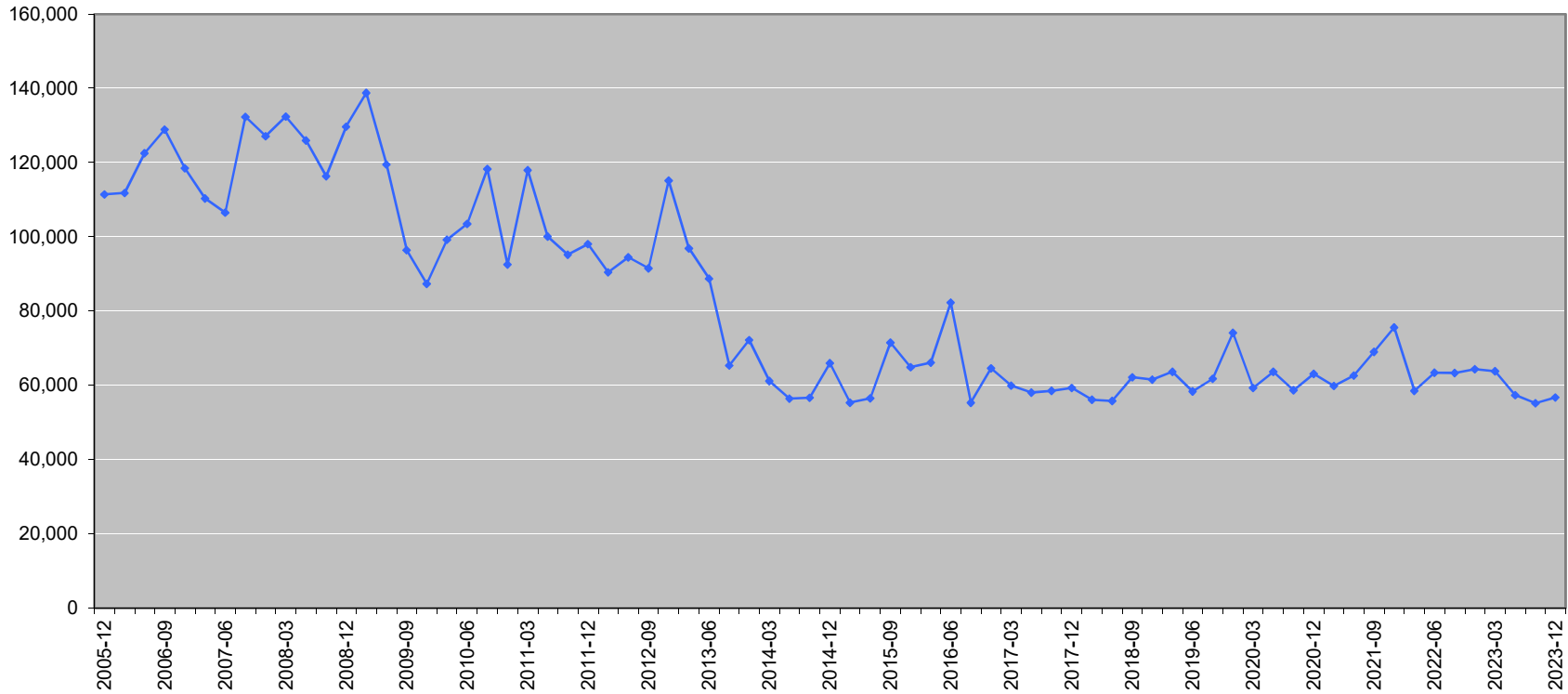
流动号码转携统计数字

Mobile Number Portability (MNP) refers to an arrangement for the porting of numbers from one mobile network operator to another, usually upon customers' request.

流動號碼轉攜（MNP）指流動網絡營辦商之間的號碼轉攜安排，通常是因應消費者要求而進行的。

流动号码转携（MNP）指流动网络营办商之间的号码转携安排，通常是因应消费者要求而进行的。

Number of Successful Portings 成功轉攜數字 成功转携数字



Month 月份	Number of Submitted Applications 申請宗數 申請宗數	Number of Successful Portings 成功轉攜宗數 成功轉携宗數	Porting Success Rate 成功率
2023-12	64,986	56,749	87.3%
2023-09	62,720	55,180	88.0%
2023-06	63,223	57,343	90.7%
2023-03	70,801	63,847	90.2%
2022-12	71,851	64,329	89.5%
2022-09	71,074	63,326	89.1%
2022-06	70,202	63,422	90.3%
2022-03	64,325	58,500	90.9%
2021-12	83,456	75,664	90.7%
2021-09	75,410	69,001	91.5%
2021-06	69,056	62,686	90.8%
2021-03	65,657	59,888	91.2%
2020-12	68,863	63,123	91.7%
2020-09	63,836	58,699	92.0%
2020-06	68,656	63,630	92.7%
2020-03	65,241	59,315	90.9%
2019-12	80,082	74,181	92.6%
2019-09	68,007	61,790	90.9%
2019-06	60,370	58,379	96.7%
2019-03	68,046	63,666	93.6%
2018-12	66,183	61,586	93.1%
2018-09	67,803	62,194	91.7%
2018-06	60,112	55,846	92.9%
2018-03	59,952	56,107	93.6%
2017-12	63,571	59,300	93.3%
2017-09	63,058	58,504	92.8%
2017-06	61,218	58,102	94.9%
2017-03	63,773	59,904	93.9%
2016-12	68,354	64,583	94.5%
2016-09	58,571	55,317	94.4%
2016-06	85,500	82,269	96.2%
2016-03	69,334	66,122	95.4%
2015-12	67,927	64,882	95.5%
2015-09	76,241	71,540	93.8%
2015-06	59,631	56,481	94.7%
2015-03	58,196	55,318	95.1%
2014-12	69,166	65,999	95.4%
2014-09	59,988	56,677	94.5%
2014-06	60,056	56,474	94.0%
2014-03	65,574	61,204	93.3%
2013-12	76,464	72,225	94.5%
2013-09	69,269	65,400	94.4%
2013-06	93,927	88,752	94.5%
2013-03	102,214	96,903	94.8%
2012-12	121,282	115,168	95.0%
2012-09	100,346	91,563	91.2%
2012-06	101,881	94,499	92.8%
2012-03	97,475	90,423	92.8%
2011-12	106,809	98,043	91.8%
2011-09	105,082	95,201	90.6%
2011-06	104,003	100,098	96.2%
2011-03	125,925	117,958	93.7%
2010-12	97,617	92,596	94.9%
2010-09	123,419	118,241	95.8%
2010-06	107,342	103,526	96.4%
2010-03	103,953	99,235	95.5%
2009-12	92,001	87,365	95.0%
2009-09	102,486	96,478	94.1%
2009-06	125,134	119,479	95.5%
2009-03	146,075	138,760	95.0%
2008-12	134,719	129,684	96.3%
2008-09	122,452	116,314	95.0%
2008-06	132,124	125,933	95.3%

Month 月份	Number of Submitted Applications 申請宗數 申請宗數	Number of Successful Portings 成功轉攜宗數 成功轉携宗數	Porting Success Rate 成功率
2008-03	140,970	132,371	93.9%
2007-12	136,530	127,140	93.1%
2007-09	143,892	132,300	91.9%
2007-06	113,680	106,566	93.7%
2007-03	117,957	110,342	93.5%
2006-12	126,815	118,507	93.4%
2006-09	136,698	128,893	94.3%
2006-06	128,821	122,521	95.1%
2006-03	118,546	111,854	94.4%
2005-12	117,757	111,397	94.6%
2005-09	130,811	123,808	94.6%
2005-06	108,113	101,936	94.3%
2005-03	94,354	89,961	95.3%
2004-12	96,400	90,700	94.1%
2004-09	148,400	142,600	96.1%
2004-06	93,800	88,100	93.9%
2004-03	75,500	71,000	94.0%
2003-12	69,800	65,800	94.3%
2003-09	75,600	71,400	94.4%
2003-06	102,700	97,600	95.0%
2003-03	121,100	115,700	95.5%
2002-12	64,300	60,900	94.7%
2002-09	62,400	59,400	95.2%
2002-06	66,500	63,300	95.2%
2002-03	145,516	140,360	96.5%
2001-12	132,779	127,896	96.3%
2001-09	162,992	157,625	96.7%
2001-06	175,011	170,667	97.5%
2001-03	170,329	163,231	95.8%
2000-12	144,509	139,141	96.3%
2000-09	143,492	140,232	97.7%
2000-06	141,860	137,604	97.0%
2000-03	122,756	119,298	97.2%
1999-12	67,522	64,406	95.4%
1999-09	76,097	71,127	93.5%
1999-06	69,700	68,000	97.6%

* HKCA 2103 refers to "Requirements for Mobile Number Portability by Database Solution" issued by the Communications Authority.

* Submitted Applications refer to the Number Portability Request (NPR, refer to HKCA 2103) in the off-line electronic number porting platform.

* Successful Porting refers to the Successful Completion of Advice of Portable Number (SCAPN, refer to HKCA 2103) in the off-line electronic number porting platform.

* There is a difference between NPR and SCAPN because some porting requests are rejected due to various reasons such as mismatch of information, or cancelled by the customer. Any rejected porting request can be resubmitted and it should be treated as a new porting request.

* HKCA 2103規格指通訊事務管理局發出的規格《透過數據庫方案提供流動電話號碼可攜服務的規定》。

* 申請宗數是離線電子號碼轉攜平台的號碼轉攜要求（NPR，參閱HKCA 2103）數字。

* 成功轉攜宗數是離線電子號碼轉攜平台的號碼轉攜通知成功完成（SCAPN，參閱HKCA 2103）數字。

* 部分轉攜要求因資料不符而被拒或消費者要求取消申請，因此NPR和SCAPN的數字並不相同。被拒的轉攜要求可以經營辦商再次申請，但須視為一個新的轉攜申請。

* HKCA 2103規格指通訊事務管理局發出的規格《透過數據庫方案提供流動電話號碼可携服务的規定》。

* 申請宗數是离线电子号码转携平台的号码转携要求（NPR，参阅HKCA 2103）数字。

* 成功转携宗数是离线电子号码转携平台的号码转携通知成功完成（SCAPN，参阅HKCA 2103）数字。

* 部分转携要求因资料不符而被拒或消费者要求取消申请，因此NPR和SCAPN的数字并不相同。被拒的转携要求可以经营办商再次申请，但须视为一个新的转携申请。